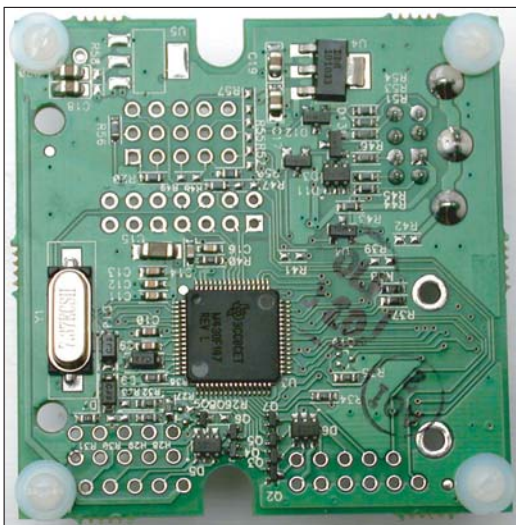


Delta System

V003856 - MSP430-Based System

Features

- Utilizes the TI MSP430F14x Family of Processors
- All GPIO Are Brought Out to Connectors
- On-Board LDO Regulator for Power Regulation
- Small, Locking Mini-DIN Connector for Serial Communication
 - Optional Cable Provides an RS-232 DB9 Connector
- Input Voltage Range - 4V - 7V



For more information about this product, please contact:

VPI Embedded

11814 S. Election Road, Suite 200
 Draper, UT 84020
 801-495-2310
www.vpiembedded.com
info@vpiembedded.com

Specifications on the TI MSP430F14x Family

- 16-Bit RISC architecture, 125-ns instruction cycle time
- 8 channel, 12-bit A/D converter with internal reference, sample-and-hold, and autoscan feature
- Wake-up from standby mode in less than 6 μ s
- Ultra-low power consumption:
 - Active Mode: 280 μ A at 1 MHz, 2.2V
 - Standby Mode: 1.6 μ A
 - Off Mode (RAM Retention): 0.1 μ A
- Five power-saving modes
- 16-Bit Timer_B with seven Capture/Compare-With-Shadow registers
- 16-Bit Timer_A with three Capture/Compare registers
- On-chip comparator
- Serial onboard programming, no external programming voltage needed. Programmable code protection by security fuse.
- Serial communication interface (USART), functions as asynchronous UART or synchronous SPI interface
 - Two USARTs (USART0, USART1) — MSP430x14x(1) devices
- Compatible Family Members Include:
 - MSP430F147, MSP430F1471:
 - 32KB+256B Flash Memory, 1KB RAM
 - MSP430F148, MSP430F1481:
 - 48KB+256B Flash Memory, 2KB RAM
 - MSP430F149, MSP430F1491:
 - 60KB+256B Flash Memory, 2KB RAM

